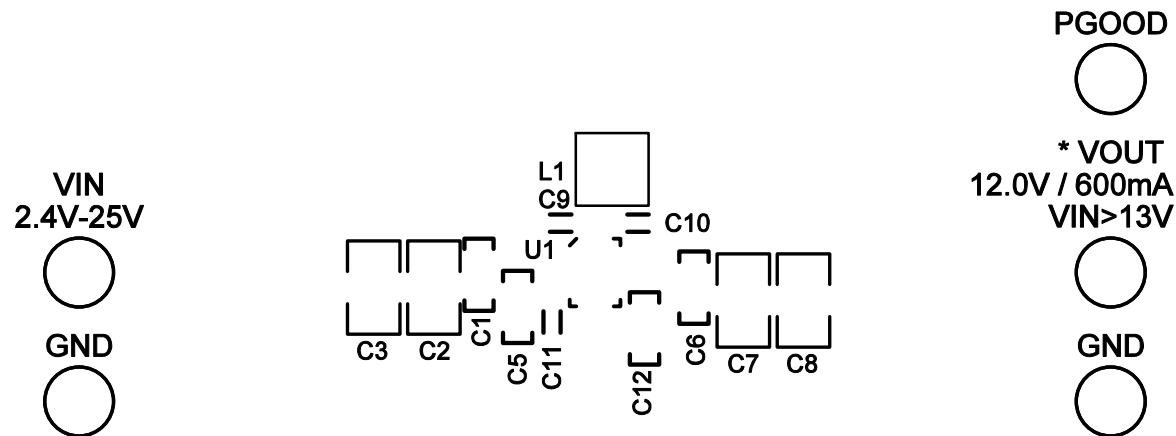


LTC3130-1

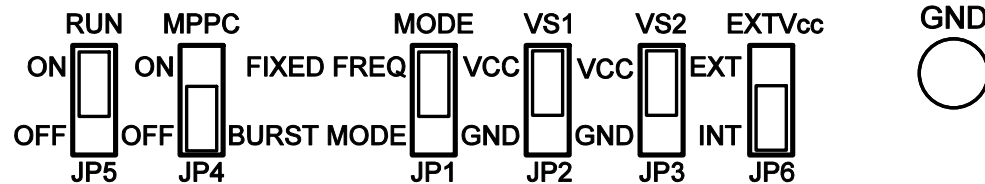
25V, 600mA BUCK-BOOST DC/DC CONVERTER WITH 1.6uA QUIESCENT CURRENT DEMO CIRCUIT 2397A



NOTE: FOR MPPC, REMOVE
R4 AND POPULATE R5 AND R6.
DO NOT ALLOW MPPC PIN
VOLTAGE TO EXCEED 6.0V.

* VOUT JUMPER CONFIGURATION

JP2 / VS1	JP3 / VS2	LTC3130-1 VOUT
GND	GND	1.8V
VCC	GND	3.3V
GND	VCC	5.0V
VCC	VCC	12V



LINEAR TECHNOLOGY www.linear.com
(408) 432-1900

TOP SILKSCREEN
LINEAR TECH CORP.
DEMO CIRCUIT 2397A-3 * LTC3130-1
DATE: 05-23-16